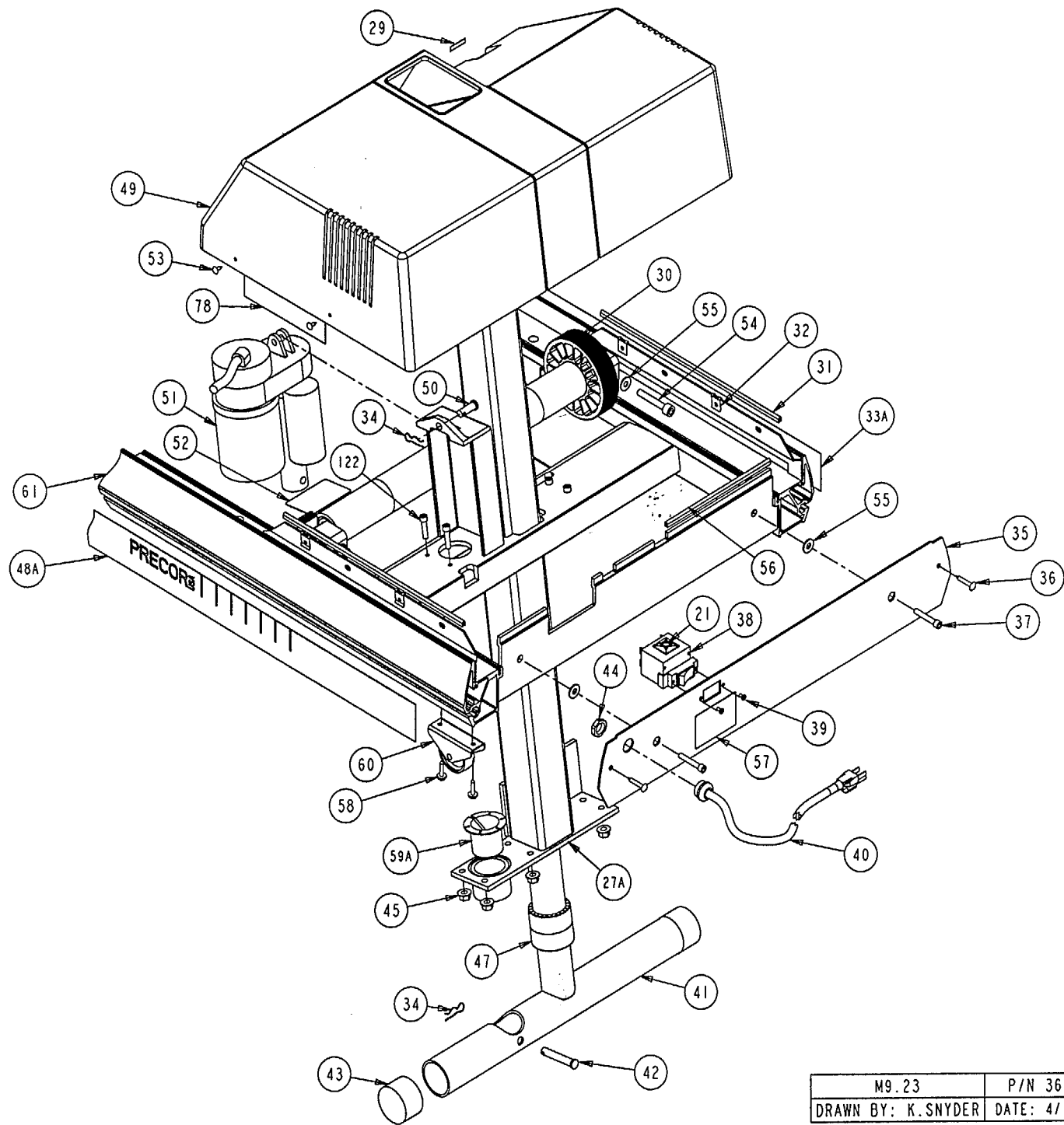
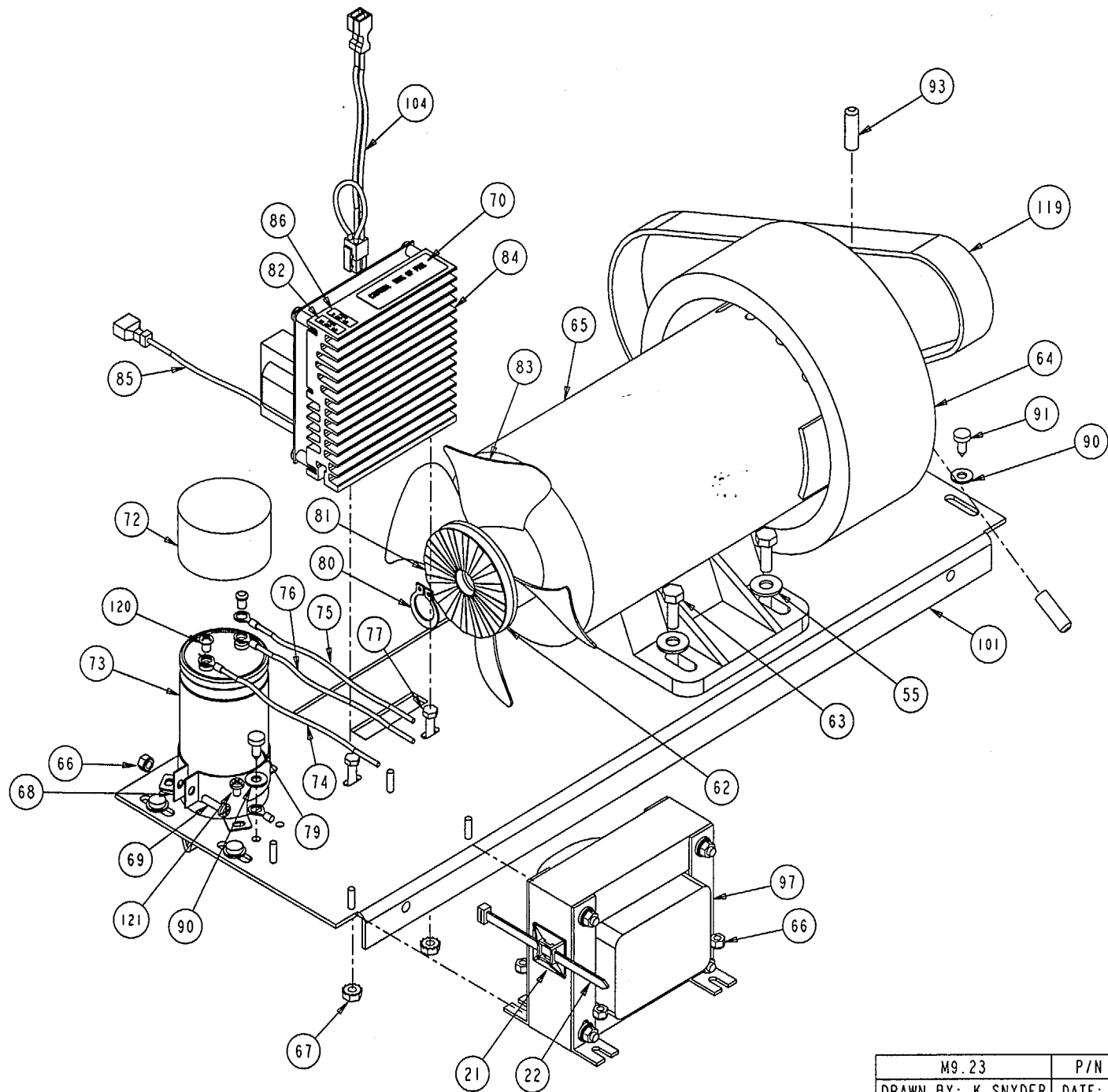


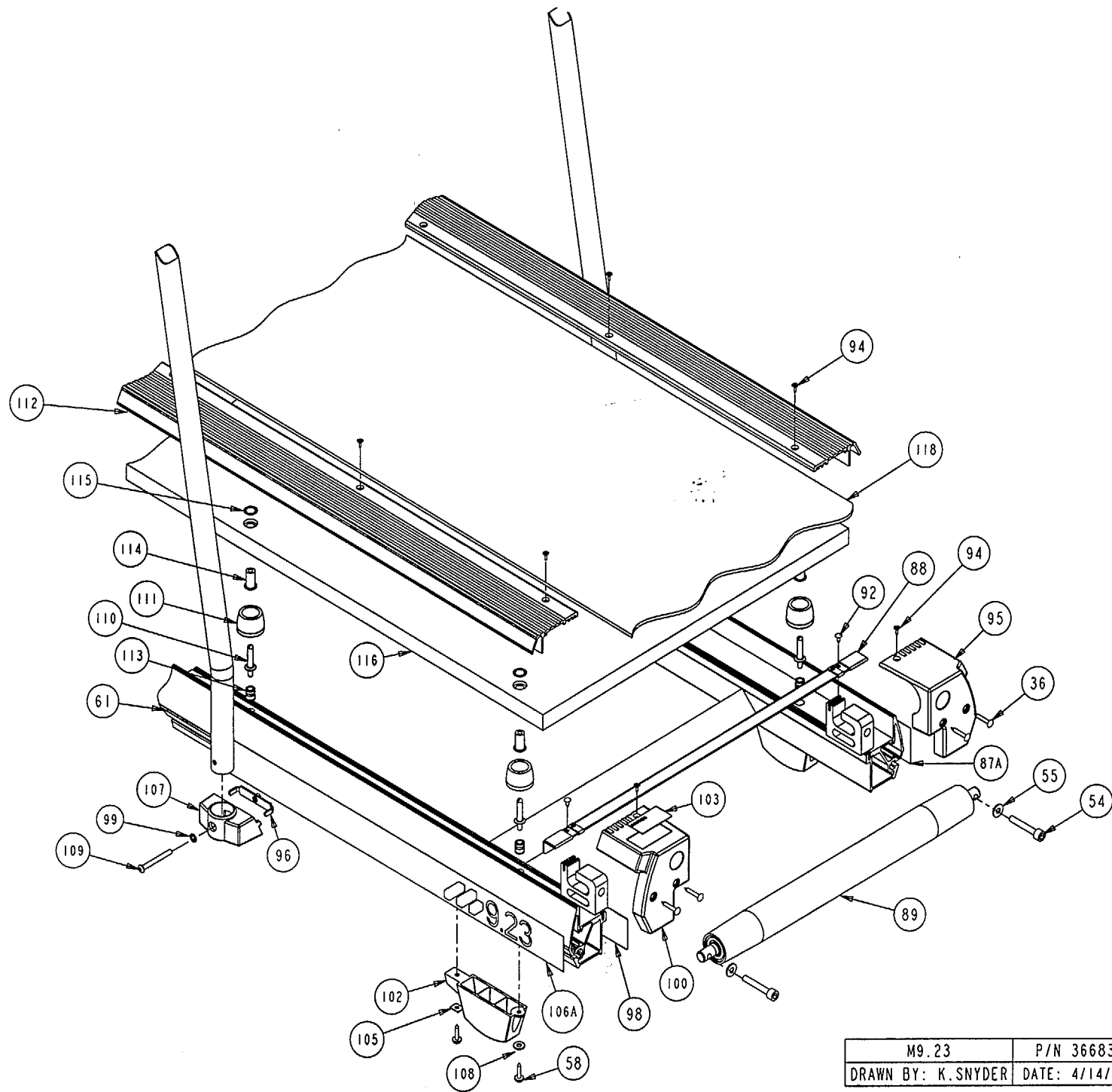
M9.23	P/N 36683	REV: A
DRAWN BY: K.SNYDER	DATE: 4/14/95	SHEET 1 OF 4



M9.23	P/N 36683	REV: A
DRAWN BY: K.SNYDER	DATE: 4/14/95	SHEET 2 OF 4



M9.23	P/N 36683	REV: A
DRAWN BY: K. SNYDER	DATE: 4/14/95	SHEET 3 OF 4



M9.23	P/N 36683	REV: A
DRAWN BY: K. SNYDER	DATE: 4/14/95	SHEET 4 OF 4

9.23 (serial code E2)

Part Number	Description	Bubble Number
37364-101	SPRAY, CONDUCTIVE, ECG, 60ML	3
38818-102	KIT, LITERATURE, HR OPTION	6
38819-102	TRANSMITTER, HEARTRATE, W/STRAP	7
37742-101	PCA, SAFETY SWITCH	8
36460-102	PCA, DISPLAY, M9.25, M9.45,	9
36590-107	PROM, 9.23, V1.07	10
36191-506	GRIP, HANDRAIL, 37.25 , M9.23	12
50959-101	ASSY, HANDRAIL LEFT, M9.23	13
50958-101	ASSY, HANDRAIL RIGHT, M9.23	14
36443-102	CLAMP, HANDRAIL, UPPER, PAINTED	15
PMKN016-050	SCREW, TCS, #8X1/2, PHIL, BLK ZN, TYPE25	16
36054-102	TRIM, LIFT COLUMN, PAINTED,	17
36350-102	ASSY, INTERCONNECT CABLE, M9.23	18
10332-101	MOUNT, CABLE TIE	21
10123-102	CABLE TIE, 3-7/8 LONG, WHITE, NYL	22
WAMCN025-002	WASHER, LOCK, EXT TOOTH, 1/4	23
TAKN025-050	SCREW, BTHD, 1/4-20X1/2, BLK ZN	24
CAKE025-100	SCREW, SKHD, 1/4-20X1, BLK ZN, LK	25
36556-102	CAP, TARGA, LEFT	26
36532-102	ASSY, LIFT COLUMN, PAINTED	27
38819-102	TRANSMITTER, HEARTRATE, W/STRAP	28
36108-103	ASSY, DRIVE ROLLER	30
10136-101	CLIP, U TYPE, TINNERMAN, #8	32
36567-102	LABEL, SIDE RAIL, LEFT FRONT	33
10400-103	PIN, HITCH, .093 DIA, SILVER CAD, #	34
36055-103	PLATE, DRESS, PAINTED GREY	35
PGKN016-125	SCREW, S/T, #8X1-1/4, TRS, PHIL,	36
CAKN025-150	SCREW, SKHD, 1/4-20X1.50, BLK ZN, LK	37
10435-101	CKT BRKR, 250V, MAGNETIC, ROCKER,	38
MGKN013-025	SCREW, MCH, 6-32X1/4, PANHD, PHIL,	39
50966-101	ASSY, LIFT COLUMN, M9.23	41
10401-102	PIN, CLEVIS, 3/8 X 2 1/4, 9.2	42
33891-101	CAP, END, PLASTIC	43
10237-101	LOCKNUT, 7/8 , NYLON, BLACK	44
KALCN050-023	LOCKNUT, FLANGE WHIZ, 1/4-20	45
WALCN025-006	WASHER, SPLIT LOCK, 1/4 MED,	46
31315-101	BEARING, LIFT JACK, 905E 9.1	47
36567-101	LABEL, SIDE RAIL, RIGHT FRONT	48
31747-103	HOOD, PLASTIC, GRAY	49
10401-101	PIN, CLEVIS, 3/8 , SILVER CAD	50
36554-101	LABEL, DO NOT ROTATE	52
CAKN031-200	SCREW, SKHD, 5/16-18X2, BLK ZN, LK	54
10104-118	TAPE, (FROM 100' RL), 3/8 TO	56
PKCN019-075	SCREW, S/T, #10X.75, WSHHXHD, ZN	58
11105-101	BEARING, FLANGED, PLASTIC	59
11115-101	CASTOR	60
36635-102	DISC, TARGET MOUNT	62
HCRN025-075	SCREW, HEX, GR 5, 1/4-20X3/4, SIL ZN	63
KGCN016-013	LOCKNUT, STARWASHER 8-32, HEX	66
KHCN019-013	LOCKNUT, STARWASHER, 10-32,	67

10036-101	CLAMP,CAPACITOR,2.0 NOM	68
MGCN016-063	SCREW,MCH,8-32X5/8,PANHD,PHIL,	69
33272-101	LABEL, CAPACITOR DISCHARGE	71
10479-101	CAPACITOR CAP,2 OD X 1 HIGH	72
10035-108	CAP,AL-E,2200UF,200V,2.02 X3.69	73
31894-101	ASSY, CABLE, CAPACITOR TO	74
HNCN019-075	SCREW,MCH,10-32X3/4,HEX,ZN	77
MAACN019-075	SCREW,MCH,10-32X3/4,HEX,ZN	77
37019-501	LABEL, HOOD PANEL, UNIVERSAL	78
MHCN019-038	SCREW,MCH,10-32X3/8,PANHD,PHIL	79
32947-101	LABEL, FLYWHEEL TARGET, WITH	81
10753-101	FAN,MOTOR HUB	83
36568-101	LABEL, SIDE RAIL, RIGHT REAR	87
36056-104	GUARD, FINGER, REAR, PAINTED	88
WACN019-005	WASHER, FLT, #10X.500X.049,ZN	90
PACN019-050	SCREW,S/T,#10X1/2,PANHD,PHIL,	91
PGCN019-050	SCREW,S/T,#10X1/2,TRS,PHIL,ZN,	92
EMKN008-010	SCREW,SET,M8-1.25XM10,KNRLDCUP	93
DCKN019-100	SCREW,WOOD #10X1, L=1.00	94
36102-103	PLATE, NUT	96
31551-103	INDUCTOR, 6.7MH, 3A, W/LEADS,	97
WATNN025-003	WASHER, LK-INT, ID=.25,	99
36955-104	ENDCAP, LEFT, GRAY, M9.21/2,	100
36625-101	BASE PLATE, MOTOR MOUNT, M9.23	101
36441-101	FOOT, REAR	102
36122-501	LABEL, CAUTION, GREY	103
WBBNN022-004	WASHER, RECTANGULAR	105
36568-102	LABEL, SIDE RAIL, LEFT REAR	106
WBNN025-007	WASHER, FLT, 1/4, ID= .281,	108
TAKN025-250	SCREW,BTHD,1/4-20X2-1/2,BLK ZN	109
36118-103	STUD, BED, HEX DRIVE	110
33563-102	SPRING, BED SUPPORT	111
34066-103	EXTRUSION, TRIM, GREY	112
10546-102	NUTSERT, 5/16-18	113
37033-101	BUSHING, SOFT DECK	113
10043-105	BEARING, FLANGE, ID .377	114
50985-101	ASSY,BED,SFT	116
36355-101	RUNNING BELT,SIEGLING,17 X 110	118
10217-104	BELT, DRIVE, 285J10, POLY V	119
MHCN019-025	SCREW,MCH,10-32X1/4,PANHD,PHIL	120
MGCN016-025	SCREW,MCH,8-32X1/4,PANHD,PHIL,	121
CAKE025-100	SCREW,SKHD,1/4-20X1,BLK ZN,LK	122
36141-101	SHIPPER,BOTTOM,9.10,9.20,9.20S	200
36142-101	SHIPPER, TOP, 9.10,9.20,9.20S	201
36144-101	SHIPPER, LIFT MECH, 9.10,9.20,	202
36149-101	SHIPPER, HANDRAIL SUPPORT,	203
36558-104	KIT, HARDWARE, M9.23	204
38057-101	SHIPPER,MONITOR BOX	206
38054-101	SHIPPER,INSERT,DISPLAY BOX	207
36677-101	SHIPPER, CRANK SUPPORT, 9.25,	209
36678-101	SHIPPER, FOAM BLOCK, LEFT	210
36678-102	SHIPPER, FOAM BLOCK, RIGHT	211

10106-101	RUBBER BAND, 2 X 3/4	212
10123-101	CABLE TIE, 11 LONG, WHITE, NYL	213
50962-102	ASSY, SHIPPER, M9.23	214
50969-101	ASSY, LIFT JACK, M9.23	221
36559-102	KIT, LITERATURE, M9.23	999